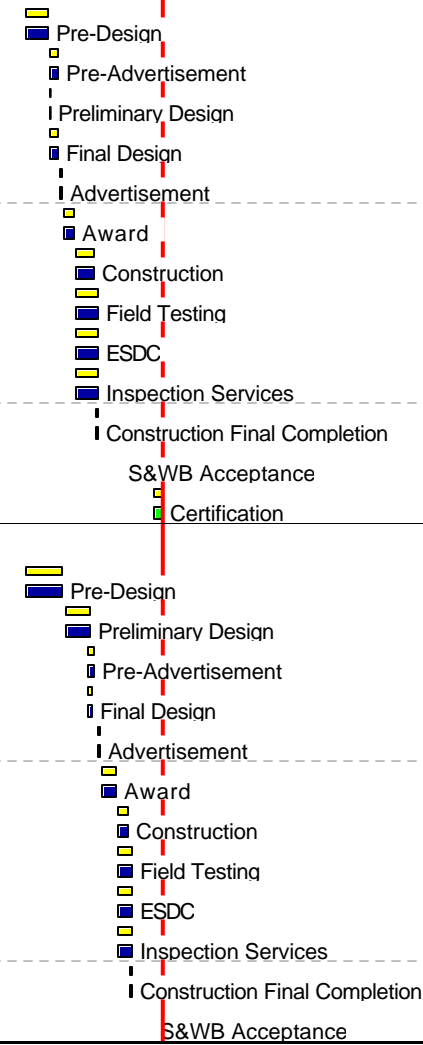


Description	Projected Start	Target Start	Projected Finish	Target Finish	%	Budgeted Cost																		
							19	1997	1998	1999	2000	2001	2002	2003	2004	2005	2006	2007	2008	2009	2010	2011	2012	2013
<b>Rehabilitation</b>																								
<b>Mid-City</b>																								
<b>3940 Mid-City Manhole Rehabilitation #1</b>																								
Pre-Design	21MAR02 A	21MAR02	24OCT02 A	24OCT02	100	0																		
Pre-Advertisement	18OCT02 A	18OCT02	08JAN03 A	08JAN03	100	0																		
Preliminary Design	24OCT02 A	24OCT02	03NOV02 A	03NOV02	100	14,920																		
Final Design	24OCT02 A	24OCT02	10JAN03 A	10JAN03	100	30,145																		
Advertisement	15JAN03 A	15JAN03	14FEB03 A	14FEB03	100	3,805																		
Award	14FEB03 A	14FEB03	09JUN03 A	09JUN03	100	1,269																		
Construction	09JUN03 A	09JUN03	04DEC03 A	04DEC03	100	150,107																		
Field Testing	09JUN03 A	09JUN03	04JAN04 A	04JAN04	100	2,252																		
ESDC	09JUN03 A	09JUN03	04JAN04 A	04JAN04	100	6,364																		
Inspection Services	09JUN03 A	09JUN03	04JAN04 A	04JAN04	100	16,512																		
Construction Final Completion	05DEC03 A	05DEC03	04JAN04 A	04JAN04	100	0																		
S&WB Acceptance	21JUL04 A	21JUL04	21JUL04 A	21JUL04	100	0																		
Certification	22APR05	23APR05	20JUL05	21JUL05	0	10,000																		
<b>3953 Mid-City Excavated Point Repair No. 1</b>																								
Pre-Design	21MAR02 A	21MAR02	21FEB03 A	21FEB03	100	0																		
Preliminary Design	10MAR03 A	10MAR03	27OCT03 A	27OCT03	100	20,777																		
Pre-Advertisement	24SEP03 A	24SEP03	03DEC03 A	03DEC03	100	0																		
Final Design	26SEP03 A	26SEP03	17NOV03 A	17NOV03	100	32,398																		
Advertisement	10DEC03 A	10DEC03	23JAN04 A	23JAN04	100	2,848																		
Award	23JAN04 A	23JAN04	01JUN04 A	01JUN04	100	949																		
Construction	01JUN04 A	01JUN04	28SEP04 A	28SEP04	100	472,055																		
Field Testing	01JUN04 A	01JUN04	28OCT04 A	28OCT04	100	7,081																		
ESDC	01JUN04 A	01JUN04	28OCT04 A	28OCT04	100	4,268																		
Inspection Services	01JUN04 A	01JUN04	28OCT04 A	28OCT04	100	51,926																		
Construction Final Completion	29SEP04 A	29SEP04	28OCT04 A	28OCT04	100	0																		
S&WB Acceptance	20APR05	27JAN05	20APR05	27JAN05	0	0																		



Data date	01MAR05
Page number	1A
Page count	11A
© Primavera Systems, Inc.	

**Sewerage & Water Board of New Orleans**  
**Sewer System Evaluation and Rehabilitation Program**  
**Master Schedule**

- Early bar
- Target bar
- Progress bar



Description	Projected Start	Target Start	Projected Finish	Target Finish	%	Budgeted Cost																		
							19	1997	1998	1999	2000	2001	2002	2003	2004	2005	2006	2007	2008	2009	2010	2011	2012	2013
<b>3956 Mid-City Excavated Point Repair No. 2</b>																								
Pre-Design	21MAR02 A	21MAR02	21FEB03 A	21FEB03	100	0																		
Preliminary Design	10MAR03 A	10MAR03	27OCT03 A	27OCT03	100	20,778																		
Final Design	13NOV03 A	13NOV03	30JAN04 A	30JAN04	100	32,398																		
Pre-Advertisement	14NOV03 A	14NOV03	04FEB04 A	04FEB04	100	0																		
Advertisement	11FEB04 A	11FEB04	12MAR04 A	12MAR04	100	2,848																		
Award	12MAR04 A	12MAR04	19JUL04 A	18JUL04	100	949																		
Construction	19JUL04 A	19JUL04	14FEB05 A	15DEC04	100	276,173																		
Field Testing	19JUL04 A	19JUL04	14MAR05	14JAN05	91	4,143																		
ESDC	19JUL04 A	19JUL04	14MAR05	14JAN05	91	4,268																		
Inspection Services	19JUL04 A	19JUL04	14MAR05	14JAN05	91	30,379																		
Construction Final Completion	15FEB05 A	16DEC04	16MAR05	14JAN05	47	0																		
S&WB Acceptance	15JUN05	15APR05	15JUN05	15APR05	0	0																		
Certification	17MAR06	16JAN06	14JUN06	15APR06	0	20,000																		
<b>3957 Mid-City Sewer Rehabilitation No. 1</b>																								
Pre-Design	21MAR02 A	21MAR02	21FEB03 A	21FEB03	100	0																		
Preliminary Design	10MAR03 A	10MAR03	27OCT03 A	27OCT03	100	20,778																		
Final Design	23DEC03 A	23DEC03	01JUN04 A	01JUN04	100	32,398																		
Pre-Advertisement	28JAN04 A	28JAN04	02JUN04 A	02JUN04	100	0																		
Advertisement	09JUN04 A	09JUN04	23JUL04 A	23JUL04	100	2,848																		
Award	23JUL04 A	26JUL04	15NOV04 A	10JAN05	100	949																		
Construction	15NOV04 A	10JAN05	10AUG05	06OCT05	22	1,999,945																		
Field Testing	15NOV04 A	10JAN05	10SEP05	05NOV05	22	29,999																		
ESDC	15NOV04 A	10JAN05	10SEP05	05NOV05	22	4,268																		
Inspection Services	15NOV04 A	10JAN05	10SEP05	05NOV05	22	219,994																		
Construction Final Completion	12AUG05	07OCT05	10SEP05	05NOV05	0	0																		
S&WB Acceptance	21DEC05	04FEB06	21DEC05	04FEB06	0	0																		
Certification	22SEP06	07NOV06	20DEC06	04FEB07	0	20,000																		
<b>3958 Mid-City Sewer Rehabilitation No. 2</b>																								

Data date	01MAR05
Page number	3A
Page count	11A
© Primavera Systems, Inc.	

**Sewerage & Water Board of New Orleans**  
**Sewer System Evaluation and Rehabilitation Program**  
**Master Schedule**

- Early bar
- Target bar
- Progress bar



Description	Projected Start	Target Start	Projected Finish	Target Finish	%	Budgeted Cost	19   1997   1998   1999   2000   2001   2002   2003   2004   2005   2006   2007   2008   2009   2010   2011   2012   2013   2014   2015   2016   2017   2018																	
							Gantt Chart																	
Preliminary Design	10MAR03 A	10MAR03	27OCT03 A	27OCT03	100	20,778	[Gantt Chart: Preliminary Design bar from 10MAR03 to 27OCT03]																	
Pre-Advertisement	11FEB04 A	11FEB04	30JUN04 A	30JUN04	100	0	[Gantt Chart: Pre-Advertisement bar from 11FEB04 to 30JUN04]																	
Final Design	08MAR04 A	08MAR04	22JUN04 A	22JUN04	100	32,398	[Gantt Chart: Final Design bar from 08MAR04 to 22JUN04]																	
Advertisement	07JUL04 A	07JUL04	20AUG04 A	05AUG04	100	2,848	[Gantt Chart: Advertisement bar from 07JUL04 to 20AUG04]																	
Award	20AUG04 A	06AUG04	06DEC04 A	21JAN05	100	949	[Gantt Chart: Award bar from 20AUG04 to 06DEC04]																	
Construction	06DEC04 A	22JAN05	01OCT05	17NOV05	18	2,797,385	[Gantt Chart: Construction bar from 06DEC04 to 01OCT05]																	
Field Testing	06DEC04 A	22JAN05	31OCT05	17DEC05	18	41,961	[Gantt Chart: Field Testing bar from 06DEC04 to 31OCT05]																	
ESDC	06DEC04 A	22JAN05	31OCT05	17DEC05	18	4,268	[Gantt Chart: ESDC bar from 06DEC04 to 31OCT05]																	
Inspection Services	06DEC04 A	22JAN05	31OCT05	17DEC05	18	307,712	[Gantt Chart: Inspection Services bar from 06DEC04 to 31OCT05]																	
Construction Final Completion	02OCT05	18NOV05	31OCT05	17DEC05	0	0	[Gantt Chart: Construction Final Completion bar from 02OCT05 to 31OCT05]																	
S&WB Acceptance	15FEB06	18MAR06	15FEB06	18MAR06	0	0	[Gantt Chart: S&WB Acceptance bar from 15FEB06 to 18MAR06]																	
Certification	17NOV06	19DEC06	14FEB07	18MAR07	0	20,000	[Gantt Chart: Certification bar from 17NOV06 to 14FEB07]																	
<b>3961 Mid-City Sewer Rehabilitation No. 5</b>																								
Pre-Design	21MAR02 A	21MAR02	21FEB03 A	21FEB03	100	0	[Gantt Chart: Pre-Design bar from 21MAR02 to 21FEB03]																	
Preliminary Design	10MAR03 A	10MAR03	27OCT03 A	27OCT03	100	20,778	[Gantt Chart: Preliminary Design bar from 10MAR03 to 27OCT03]																	
Final Design	10APR04 A	10APR04	14JUL04 A	14JUL04	100	32,398	[Gantt Chart: Final Design bar from 10APR04 to 14JUL04]																	
Pre-Advertisement	28APR04 A	28APR04	06AUG04 A	10AUG04	100	0	[Gantt Chart: Pre-Advertisement bar from 28APR04 to 06AUG04]																	
Advertisement	11AUG04 A	11AUG04	24SEP04 A	09SEP04	100	2,848	[Gantt Chart: Advertisement bar from 11AUG04 to 24SEP04]																	
Award	24SEP04 A	10SEP04	24JAN05 A	25FEB05	100	949	[Gantt Chart: Award bar from 24SEP04 to 10SEP04]																	
Construction	24JAN05 A	26FEB05	19NOV05	21JAN06	15	2,879,348	[Gantt Chart: Construction bar from 24JAN05 to 19NOV05]																	
Field Testing	24JAN05 A	26FEB05	19DEC05	20FEB06	15	43,190	[Gantt Chart: Field Testing bar from 24JAN05 to 19DEC05]																	
ESDC	24JAN05 A	26FEB05	19DEC05	20FEB06	15	4,268	[Gantt Chart: ESDC bar from 24JAN05 to 19DEC05]																	
Inspection Services	24JAN05 A	26FEB05	19DEC05	20FEB06	15	316,728	[Gantt Chart: Inspection Services bar from 24JAN05 to 19DEC05]																	
Construction Final Completion	20NOV05	22JAN06	19DEC05	20FEB06	0	0	[Gantt Chart: Construction Final Completion bar from 20NOV05 to 19DEC05]																	
S&WB Acceptance	23MAR06	22MAY06	23MAR06	22MAY06	0	0	[Gantt Chart: S&WB Acceptance bar from 23MAR06 to 22MAY06]																	
Certification	23DEC06	22FEB07	22MAR07	22MAY07	0	20,000	[Gantt Chart: Certification bar from 23DEC06 to 22FEB07]																	
<b>3962 Mid-City Manhole Rehabilitation No. 2</b>																								
Pre-Design	21MAR02 A	21MAR02	21FEB03 A	21FEB03	100	0	[Gantt Chart: Pre-Design bar from 21MAR02 to 21FEB03]																	
Preliminary Design	10MAR03 A	10MAR03	27OCT03 A	27OCT03	100	20,778	[Gantt Chart: Preliminary Design bar from 10MAR03 to 27OCT03]																	

Data date	01MAR05
Page number	5A
Page count	11A
© Primavera Systems, Inc.	

**Sewerage & Water Board of New Orleans**  
**Sewer System Evaluation and Rehabilitation Program**  
**Master Schedule**

■ Early bar  
■ Target bar  
■ Progress bar

Description	Projected Start	Target Start	Projected Finish	Target Finish	%	Budgeted Cost	19   1997   1998   1999   2000   2001   2002   2003   2004   2005   2006   2007   2008   2009   2010   2011   2012   2013   2014   2015   2016   2017   2018																	
							Gantt Chart																	
Final Design	08MAY04 A	08MAY04	16AUG04 A	11AUG04	100	32,398	Final Design																	
Pre-Advertisement	30JUN04 A	30JUN04	06OCT04 A	07SEP04	100	0	Pre-Advertisement																	
Advertisement	13OCT04 A	08SEP04	03DEC04 A	07OCT04	100	2,848	Advertisement																	
Award	03DEC04 A	08OCT04	19JUN05	25MAR05	35	949	Award																	
Construction	19JUN05	26MAR05	15NOV05	21SEP05	0	178,185	Construction																	
Field Testing	19JUN05	26MAR05	15DEC05	21OCT05	0	2,673	Field Testing																	
ESDC	19JUN05	26MAR05	15DEC05	21OCT05	0	4,268	ESDC																	
Inspection Services	19JUN05	26MAR05	15DEC05	21OCT05	0	19,600	Inspection Services																	
Construction Final Completion	16NOV05	22SEP05	15DEC05	21OCT05	0	0	Construction Final Completion																	
S&WB Acceptance	15MAR06	20JAN06	15MAR06	20JAN06	0	0	S&WB Acceptance																	
Certification	15DEC06	23OCT06	14MAR07	20JAN07	0	10,000	Certification																	
<b>3963 Mid-City Sewer Rehabilitation No. 6</b>																								
Pre-Design	21MAR02 A	21MAR02	21FEB03 A	21FEB03	100	0	Pre-Design																	
Preliminary Design	10MAR03 A	10MAR03	27OCT03 A	27OCT03	100	20,778	Preliminary Design																	
Final Design	12JUN04 A	12JUN04	30SEP04 A	15SEP04	100	32,398	Final Design																	
Pre-Advertisement	30JUN04 A	30JUN04	02NOV04 A	12OCT04	100	0	Pre-Advertisement																	
Advertisement	10NOV04 A	13OCT04	17DEC04 A	11NOV04	100	2,848	Advertisement																	
Award	17DEC04 A	12NOV04	19JUN05	29APR05	37	949	Award																	
Construction	19JUN05	30APR05	14JAN06	25DEC05	0	1,582,965	Construction																	
Field Testing	19JUN05	30APR05	13FEB06	24JAN06	0	23,744	Field Testing																	
ESDC	19JUN05	30APR05	13FEB06	24JAN06	0	4,268	ESDC																	
Inspection Services	19JUN05	30APR05	13FEB06	24JAN06	0	174,126	Inspection Services																	
Construction Final Completion	15JAN06	26DEC05	13FEB06	24JAN06	0	0	Construction Final Completion																	
S&WB Acceptance	17MAY06	25APR06	17MAY06	25APR06	0	0	S&WB Acceptance																	
Certification	16FEB07	26JAN07	16MAY07	25APR07	0	20,000	Certification																	
<b>3964 Mid-City Sewer Rehabilitation No. 7</b>																								
Pre-Design	21MAR02 A	21MAR02	21FEB03 A	21FEB03	100	0	Pre-Design																	
Preliminary Design	10MAR03 A	10MAR03	27OCT03 A	27OCT03	100	20,778	Preliminary Design																	
Final Design	16JUL04 A	16JUL04	15OCT04 A	13OCT04	100	32,398	Final Design																	

Data date 01MAR05  
Page number 6A  
Page count 11A

**Sewerage & Water Board of New Orleans  
Sewer System Evaluation and Rehabilitation Program  
Master Schedule**

Early bar  
 Target bar  
 Progress bar

Description	Projected Start	Target Start	Projected Finish	Target Finish	%	Budgeted Cost	19   1997   1998   1999   2000   2001   2002   2003   2004   2005   2006   2007   2008   2009   2010   2011   2012   2013   2014   2015   2016   2017   2018																	
							Gantt Chart																	
Pre-Advertisement	18AUG04 A	18AUG04	02NOV04 A	09NOV04	100	0	Pre-Advertisement																	
Advertisement	10NOV04 A	10NOV04	17DEC04 A	09DEC04	100	2,848	Advertisement																	
Award	17DEC04 A	10DEC04	19JUN05	27MAY05	37	950	Award																	
Construction	19JUN05	28MAY05	14JAN06	22JAN06	0	2,090,558	Construction																	
Field Testing	19JUN05	28MAY05	13FEB06	21FEB06	0	31,358	Field Testing																	
ESDC	19JUN05	28MAY05	13FEB06	21FEB06	0	4,268	ESDC																	
Inspection Services	19JUN05	28MAY05	13FEB06	21FEB06	0	229,961	Inspection Services																	
Construction Final Completion	15JAN06	23JAN06	13FEB06	21FEB06	0	0	Construction Final Completion																	
S&WB Acceptance	17MAY06	23MAY06	17MAY06	23MAY06	0	0	S&WB Acceptance																	
Certification	16FEB07	23FEB07	16MAY07	23MAY07	0	20,000	Certification																	
<b>3965 Mid-City Sewer Rehabilitation No. 8</b>																								
Pre-Design	21MAR02 A	21MAR02	21FEB03 A	21FEB03	100	0	Pre-Design																	
Preliminary Design	10MAR03 A	10MAR03	27OCT03 A	27OCT03	100	20,778	Preliminary Design																	
Final Design	13AUG04 A	13AUG04	01NOV04 A	10NOV04	100	32,399	Final Design																	
Pre-Advertisement	31AUG04 A	15SEP04	24NOV04 A	07DEC04	100	0	Pre-Advertisement																	
Advertisement	01DEC04 A	08DEC04	14JAN05 A	06JAN05	100	2,848	Advertisement																	
Award	14JAN05 A	07JAN05	16JUL05	24JUN05	14	950	Award																	
Construction	16JUL05	25JUN05	12DEC05	21DEC05	0	1,493,099	Construction																	
Field Testing	16JUL05	25JUN05	11JAN06	20JAN06	0	22,396	Field Testing																	
ESDC	16JUL05	25JUN05	11JAN06	20JAN06	0	4,268	ESDC																	
Inspection Services	16JUL05	25JUN05	11JAN06	20JAN06	0	164,241	Inspection Services																	
Construction Final Completion	13DEC05	22DEC05	11JAN06	20JAN06	0	0	Construction Final Completion																	
S&WB Acceptance	19APR06	21APR06	19APR06	21APR06	0	0	S&WB Acceptance																	
Certification	19JAN07	22JAN07	18APR07	21APR07	0	20,000	Certification																	
<b>3967 Mid-City Sewer Rehabilitation No. 9</b>																								
Pre-Design	21MAR02 A	21MAR02	21FEB03 A	21FEB03	100	0	Pre-Design																	
Preliminary Design	10MAR03 A	10MAR03	27OCT03 A	27OCT03	100	20,778	Preliminary Design																	
Final Design	18SEP04 A	17SEP04	21DEC04 A	15DEC04	100	32,399	Final Design																	
Pre-Advertisement	29SEP04 A	20OCT04	06JAN05 A	11JAN05	100	0	Pre-Advertisement																	

Data date	01MAR05
Page number	7A
Page count	11A
© Primavera Systems, Inc.	

**Sewerage & Water Board of New Orleans**  
**Sewer System Evaluation and Rehabilitation Program**  
**Master Schedule**

- Early bar
- Target bar
- Progress bar



Description	Projected Start	Target Start	Projected Finish	Target Finish	%	Budgeted Cost	19   1997   1998   1999   2000   2001   2002   2003   2004   2005   2006   2007   2008   2009   2010   2011   2012   2013   2014   2015   2016   2017   2018																	
							Gantt Chart Timeline																	
<b>3970 Mid-City Sewer Rehabilitation No. 12</b>																								
<b>3971 Mid-City Sewer Rehabilitation No. 13</b>																								

Data date	01MAR05
Page number	9A
Page count	11A
© Primavera Systems, Inc.	

**Sewerage & Water Board of New Orleans**  
**Sewer System Evaluation and Rehabilitation Program**  
**Master Schedule**

■ Early bar  
■ Target bar  
■ Progress bar



	Description	Projected Start	Target Start	Projected Finish	Target Finish	%	Budgeted Cost															
								19	1997	1998	1999	2000	2001	2002	2003	2004	2005	2006	2007	2008	2009	2010
	ESDC	02JAN06		30JUN06		0	4,267	<div style="display: flex; justify-content: space-between;"> <div style="width: 60%;"></div> <div style="width: 35%;"> <p>■ ESDC</p> <p>■ Construction Final Completion</p> <p>--- S&amp;WB Resolution</p> <p>■ Certification</p> </div> </div>														
	Construction Final Completion	01JUN06		30JUN06		0	0															
	S&WB Resolution	29SEP06		29SEP06		0	0															
	Certification	01JUL07		28SEP07		0	20,000															

Data date	01MAR05
Page number	11A
Page count	11A
© Primavera Systems, Inc.	

**Sewerage & Water Board of New Orleans**  
**Sewer System Evaluation and Rehabilitation Program**  
**Master Schedule**

- Early bar
- Target bar
- Progress bar