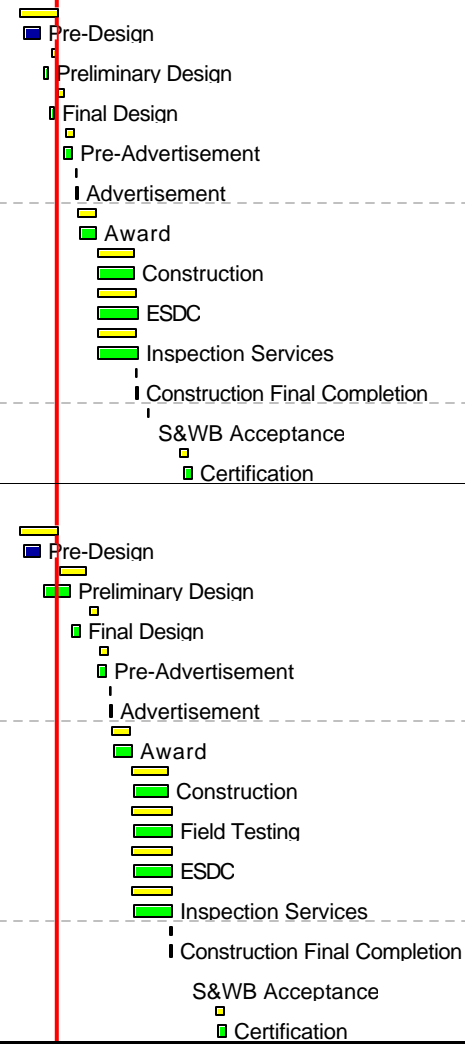


Description	Projected Start	Target Start	Projected Finish	Target Finish	%	Budgeted Cost																									
							19	1997	1998	1999	2000	2001	2002	2003	2004	2005	2006	2007	2008	2009	2010	2011	2012	2013	2014	2015	2016	2017	2018		
Rehabilitation																															
New Orleans East																															
New Orleans East Cleaning & CCTV Inspection																															
Pre-Design	22SEP04 A	18AUG04	04MAR05	11AUG05	91	0																									
Preliminary Design	07MAR05	19MAY05	06MAY05	21JUL05	0	35,600																									
Final Design	09MAY05	22JUL05	07JUL05	20SEP05	0	52,100																									
Pre-Advertisement	31AUG05	21SEP05	07DEC05	13DEC05	0	0																									
Advertisement	14DEC05	14DEC05	20JAN06	12JAN06	0	5,500																									
Award	20JAN06	13JAN06	10JUL06	30JUN06	0	2,000																									
Construction	10JUL06	01JUL06	04JUN07	26MAY07	0	1,819,891																									
ESDC	10JUL06	01JUL06	04JUL07	25JUN07	0	9,500																									
Inspection Services	10JUL06	01JUL06	04JUL07	25JUN07	0	200,188																									
Construction Final Completion	05JUN07	27MAY07	04JUL07	25JUN07	0	0																									
S&WB Acceptance	17OCT07	24SEP07	17OCT07	24SEP07	0	0																									
Certification	19JUL08	27JUN08	16OCT08	24SEP08	0	0																									
New Orleans East Rehab. Pipe Lining & Repairs #1																															
Pre-Design	22SEP04 A	18AUG04	04MAR05	11AUG05	91	0																									
Preliminary Design	07MAR05	12AUG05	08NOV05	14APR06	0	35,600																									
Final Design	09NOV05	17APR06	08FEB06	18JUL06	0	52,100																									
Pre-Advertisement	28JUN06	19JUL06	04OCT06	10OCT06	0	0																									
Advertisement	11OCT06	11OCT06	17NOV06	09NOV06	0	5,500																									
Award	17NOV06	10NOV06	08MAY07	01MAY07	0	2,000																									
Construction	08MAY07	02MAY07	01APR08	26MAR08	0	1,819,891																									
Field Testing	08MAY07	02MAY07	01MAY08	25APR08	0	27,298																									
ESDC	08MAY07	02MAY07	01MAY08	25APR08	0	9,500																									
Inspection Services	08MAY07	02MAY07	01MAY08	25APR08	0	204,927																									
Construction Final Completion	02APR08	27MAR08	01MAY08	25APR08	0	0																									
S&WB Acceptance	20AUG08	25JUL08	20AUG08	25JUL08	0	0																									
Certification	22MAY09	27APR09	19AUG09	25JUL09	0	20,000																									



Data date 01MAR05
Page number 1A
Page count 5A

**Sewerage & Water Board of New Orleans
Sewer System Evaluation and Rehabilitation Program
Master Schedule**

- Early bar
- Target bar
- Progress bar

Description	Projected Start	Target Start	Projected Finish	Target Finish	%	Budgeted Cost																		
							19	1997	1998	1999	2000	2001	2002	2003	2004	2005	2006	2007	2008	2009	2010	2011	2012	2013
New Orleans East Rehab. Pipe Lining & Repairs #2																								
Pre-Design	22SEP04 A	18AUG04	04MAR05	11AUG05	91	0																		
Preliminary Design	07MAR05	12AUG05	08NOV05	14APR06	0	35,600																		
Final Design	09DEC05	17MAY06	10MAR06	17AUG06	0	52,100																		
Pre-Advertisement	26JUL06	16AUG06	01NOV06	07NOV06	0	0																		
Advertisement	08NOV06	08NOV06	15DEC06	07DEC06	0	5,500																		
Award	15DEC06	08DEC06	05JUN07	29MAY07	0	2,000																		
Construction	05JUN07	30MAY07	29APR08	23APR08	0	1,819,891																		
Field Testing	05JUN07	30MAY07	29MAY08	23MAY08	0	27,298																		
ESDC	05JUN07	30MAY07	29MAY08	23MAY08	0	9,500																		
Inspection Services	05JUN07	30MAY07	29MAY08	23MAY08	0	204,927																		
Construction Final Completion	30APR08	24APR08	29MAY08	23MAY08	0	0																		
S&WB Acceptance	17SEP08	22AUG08	17SEP08	22AUG08	0	0																		
Certification	19JUN09	25MAY09	16SEP09	22AUG09	0	20,000																		
New Orleans East Rehab. Pipe Lining & Repairs #3																								
Pre-Design	22SEP04 A	18AUG04	04MAR05	11AUG05	91	0																		
Preliminary Design	07MAR05	12AUG05	08NOV05	14APR06	0	35,600																		
Final Design	10JAN06	16JUN06	11APR06	18SEP06	0	52,100																		
Pre-Advertisement	30AUG06	20SEP06	06DEC06	12DEC06	0	0																		
Advertisement	13DEC06	13DEC06	19JAN07	15JAN07	0	5,500																		
Award	19JAN07	16JAN07	09JUL07	03JUL07	0	2,000																		
Construction	09JUL07	04JUL07	02JUN08	28MAY08	0	1,819,891																		
Field Testing	09JUL07	04JUL07	02JUL08	27JUN08	0	27,298																		
ESDC	09JUL07	04JUL07	02JUL08	27JUN08	0	9,500																		
Inspection Services	09JUL07	04JUL07	02JUL08	27JUN08	0	204,927																		
Construction Final Completion	03JUN08	29MAY08	02JUL08	27JUN08	0	0																		
S&WB Acceptance	15OCT08	26SEP08	15OCT08	26SEP08	0	0																		
Certification	17JUL09	29JUN09	14OCT09	26SEP09	0	20,000																		
New Orleans East Rehab. Pipe Lining & Repairs #4																								

Data date	01MAR05
Page number	2A
Page count	5A
© Primavera Systems, Inc.	

Sewerage & Water Board of New Orleans
Sewer System Evaluation and Rehabilitation Program
Master Schedule

- Early bar
- Target bar
- Progress bar

Description	Projected Start	Target Start	Projected Finish	Target Finish	%	Budgeted Cost	19 1997 1998 1999 2000 2001 2002 2003 2004 2005 2006 2007 2008 2009 2010 2011 2012 2013 2014 2015 2016 2017 2018																	
							Gantt chart area with task bars and a vertical red line at 2005.																	
Preliminary Design	07MAR05	12AUG05	08NOV05	14APR06	0	35,600	Preliminary Design																	
Final Design	12APR06	19SEP06	13JUL06	19DEC06	0	52,100	Final Design																	
Pre-Advertisement	29NOV06	18DEC06	07MAR07	13MAR07	0	0	Pre-Advertisement																	
Advertisement	14MAR07	14MAR07	20APR07	12APR07	0	5,500	Advertisement																	
Award	20APR07	13APR07	08OCT07	01OCT07	0	2,000	Award																	
Construction	08OCT07	02OCT07	01SEP08	26AUG08	0	1,819,891	Construction																	
Field Testing	08OCT07	02OCT07	01OCT08	25SEP08	0	27,298	Field Testing																	
ESDC	08OCT07	02OCT07	01OCT08	25SEP08	0	9,500	ESDC																	
Inspection Services	08OCT07	02OCT07	01OCT08	25SEP08	0	204,927	Inspection Services																	
Construction Final Completion	02SEP08	27AUG08	01OCT08	25SEP08	0	0	Construction Final Completion																	
S&WB Acceptance	21JAN09	25DEC08	21JAN09	25DEC08	0	0	S&WB Acceptance																	
Certification	23OCT09	27SEP09	20JAN10	25DEC09	0	20,000	Certification																	
New Orleans East Rehab. Pipe Lining & Repairs #7																								
Pre-Design	22SEP04 A	18AUG04	04MAR05	11AUG05	91	0	Pre-Design																	
Preliminary Design	07MAR05	12AUG05	08NOV05	14APR06	0	35,600	Preliminary Design																	
Final Design	12MAY06	19OCT06	14AUG06	22JAN07	0	52,100	Final Design																	
Pre-Advertisement	28DEC06	17JAN07	04APR07	10APR07	0	0	Pre-Advertisement																	
Advertisement	11APR07	11APR07	18MAY07	10MAY07	0	5,500	Advertisement																	
Award	18MAY07	11MAY07	05NOV07	29OCT07	0	2,000	Award																	
Construction	05NOV07	30OCT07	29SEP08	23SEP08	0	1,819,891	Construction																	
Field Testing	05NOV07	30OCT07	29OCT08	23OCT08	0	27,298	Field Testing																	
ESDC	05NOV07	30OCT07	29OCT08	23OCT08	0	9,500	ESDC																	
Inspection Services	05NOV07	30OCT07	29OCT08	23OCT08	0	204,927	Inspection Services																	
Construction Final Completion	30SEP08	24SEP08	29OCT08	23OCT08	0	0	Construction Final Completion																	
S&WB Acceptance	18FEB09	22JAN09	18FEB09	22JAN09	0	0	S&WB Acceptance																	
Certification	20NOV09	25OCT09	17FEB10	22JAN10	0	20,000	Certification																	
New Orleans East Manhole Rehabilitation #1																								
Pre-Design	22SEP04 A	18AUG04	04MAR05	11AUG05	91	0	Pre-Design																	
Preliminary Design	07MAR05	12AUG05	08NOV05	14APR06	0	27,500	Preliminary Design																	

Data date	01MAR05
Page number	4A
Page count	5A
© Primavera Systems, Inc.	

Sewerage & Water Board of New Orleans
Sewer System Evaluation and Rehabilitation Program
Master Schedule

- Early bar
- Target bar
- Progress bar

Description	Projected Start	Target Start	Projected Finish	Target Finish	%	Budgeted Cost																										
							19	1997	1998	1999	2000	2001	2002	2003	2004	2005	2006	2007	2008	2009	2010	2011	2012	2013	2014	2015	2016	2017	2018			
Final Design	15AUG06	23JAN07	14NOV06	24APR07	0	40,500	■ Final Design																									
Pre-Advertisement	25APR07	15MAY07	01AUG07	07AUG07	0	0	■ Pre-Advertisement																									
Advertisement	08AUG07	08AUG07	21SEP07	06SEP07	0	4,100	■ Advertisement																									
Award	21SEP07	07SEP07	11MAR08	26FEB08	0	1,800	■ Award																									
Construction	11MAR08	27FEB08	03FEB09	21JAN09	0	1,408,280	■ Construction																									
Field Testing	11MAR08	27FEB08	05MAR09	20FEB09	0	21,124	■ Field Testing																									
ESDC	11MAR08	27FEB08	05MAR09	20FEB09	0	7,300	■ ESDC																									
Inspection Services	11MAR08	27FEB08	05MAR09	20FEB09	0	159,650	■ Inspection Services																									
Construction Final Completion	04FEB09	22JAN09	05MAR09	20FEB09	0	0	■ Construction Final Completion																									
S&WB Acceptance	17JUN09	22MAY09	17JUN09	22MAY09	0	0	■ S&WB Acceptance																									
Certification	19MAR10	22FEB10	16JUN10	22MAY10	0	10,000	■ Certification																									
New Orleans East Manhole Rehabilitation #2																																
Pre-Design	22SEP04 A	18AUG04	04MAR05	11AUG05	91	0	■ Pre-Design																									
Preliminary Design	07MAR05	12AUG05	08NOV05	14APR06	0	27,500	■ Preliminary Design																									
Final Design	16OCT06	26MAR07	17JAN07	25JUN07	0	40,500	■ Final Design																									
Pre-Advertisement	27JUN07	18JUL07	03OCT07	09OCT07	0	0	■ Pre-Advertisement																									
Advertisement	10OCT07	10OCT07	16NOV07	08NOV07	0	4,100	■ Advertisement																									
Award	16NOV07	09NOV07	06MAY08	29APR08	0	1,800	■ Award																									
Construction	06MAY08	30APR08	31MAR09	25MAR09	0	1,408,280	■ Construction																									
Field Testing	06MAY08	30APR08	30APR09	24APR09	0	21,124	■ Field Testing																									
ESDC	06MAY08	30APR08	30APR09	24APR09	0	7,300	■ ESDC																									
Inspection Services	06MAY08	30APR08	30APR09	24APR09	0	159,650	■ Inspection Services																									
Construction Final Completion	01APR09	26MAR09	30APR09	24APR09	0	0	■ Construction Final Completion																									
S&WB Acceptance	19AUG09	24JUL09	19AUG09	24JUL09	0	0	■ S&WB Acceptance																									
Certification	21MAY10	26APR10	18AUG10	24JUL10	0	10,000	■ Certification																									
New Orleans East Rehabilitation TBD																																
New Orleans East	09NOV07		31MAR08		0	500,000	■ New Orleans East rehabilitation																									

Data date 01MAR05
Page number 5A
Page count 5A

**Sewerage & Water Board of New Orleans
Sewer System Evaluation and Rehabilitation Program
Master Schedule**

- Early bar
- Target bar
- Progress bar