

Sewer System Evaluation and Rehabilitation Program

Capacity Project

Contract Number 3861

Name New Force Main for Convention Center SPS

Basin CBD/FQ

Council Districts B, C

Status: Phase 3.

 This project is in the Preliminary Design phase.

Resources

SSERP Project Engineer MWH

Design Engineer Meyer Engineers, Inc.

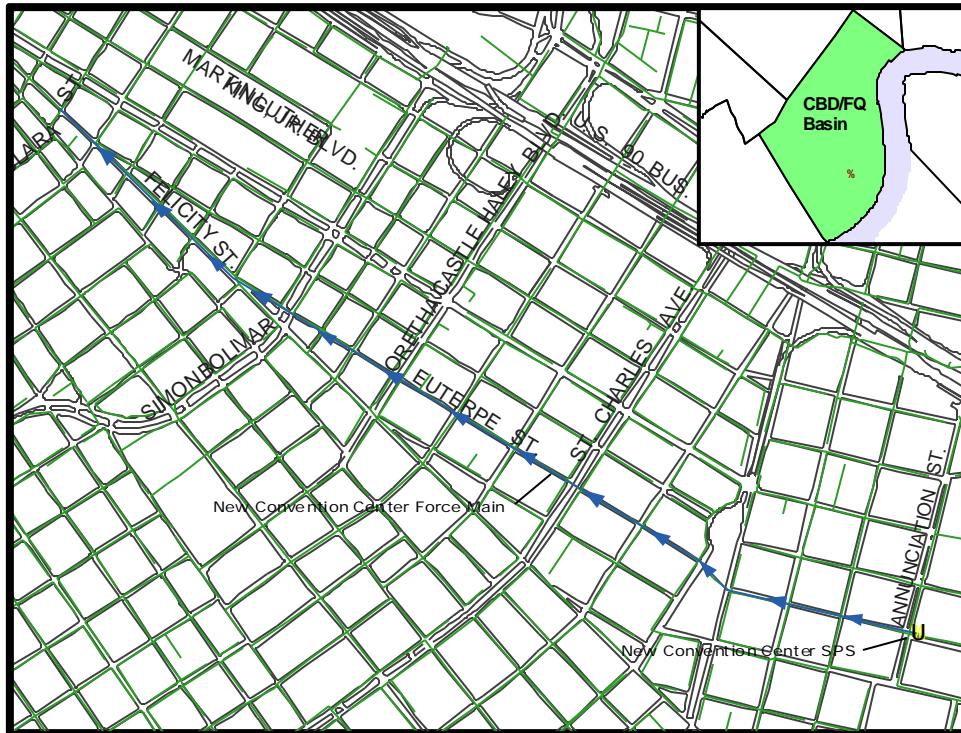
Contractor

Comments

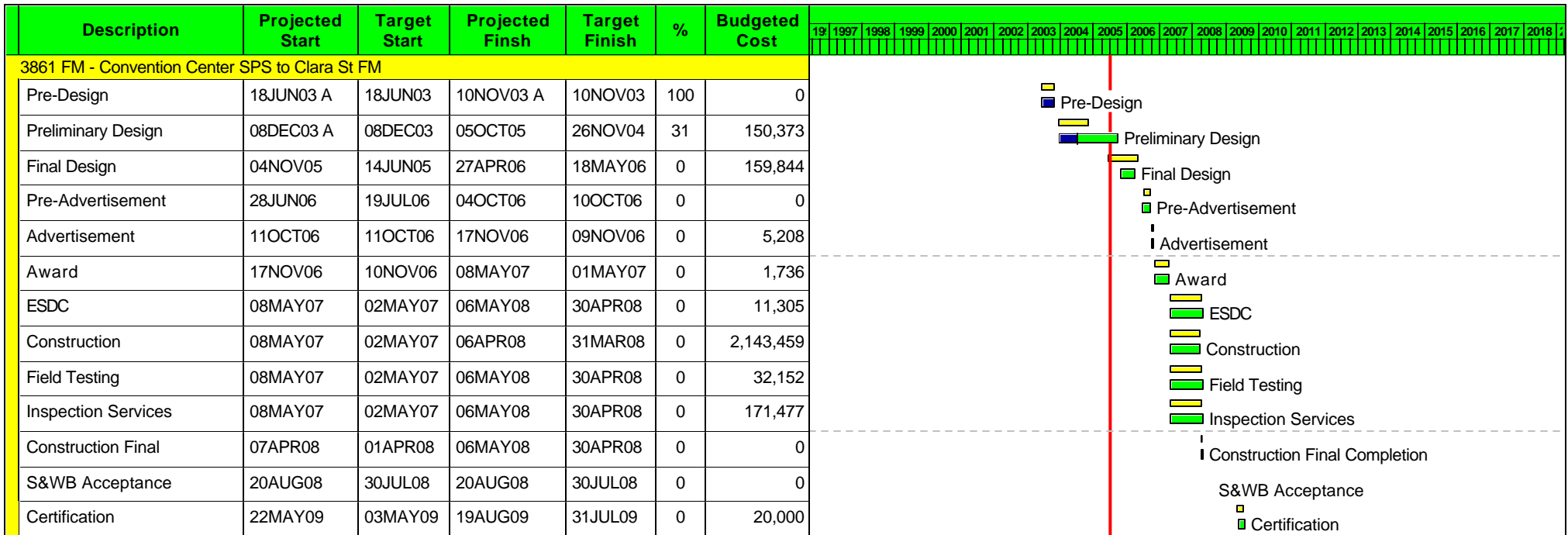
Description

This project, in the CBD/FQ Basin, consists of approximately 6,800 feet of new 8-inch force main into which the New Convention Center Pump Station will discharge. The new force main will extend from the new pump station to the Clara Street Trunk Sewer. **Figure 1** shows the project location. During the design efforts for this project, it is possible that the new force main may not extend all the way to the Clara Street Trunk Sewer, but instead, could be connected to one of the large-diameter gravity sewers that discharges to the Clara Street Trunk Sewer. The length of the new force main, therefore, may be reduced during design.

Figure 1
New Convention Center Force Main Project Location



Current Capital Cost \$2,695,554.



Data date 01MAR05

**Sewerage & Water Board of New Orleans
Sewer System Evaluation and Rehabilitation Program
Master Schedule**

- Early bar
- Target bar
- Progress bar