

Sewer System Evaluation and Rehabilitation Program

Capacity Project

Contract Number 3811

Name Upgrade Pump Station 6

Basin Mid-City

Council Districts A, B, C, D

Status: Phase 3.

This project is in the Preliminary Design / Land Acquisition phase.

Resources

SSERP Project Engineer MWH

Design Engineer CTE Engineers, Inc.

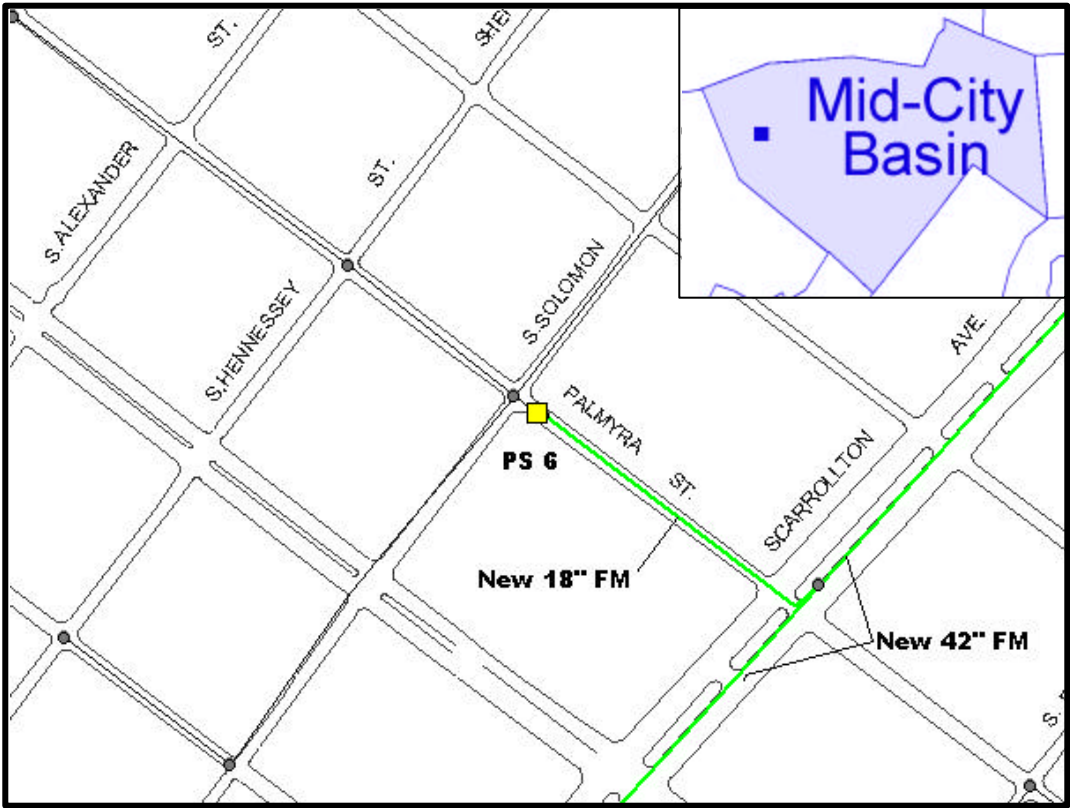
Contractor

Comments

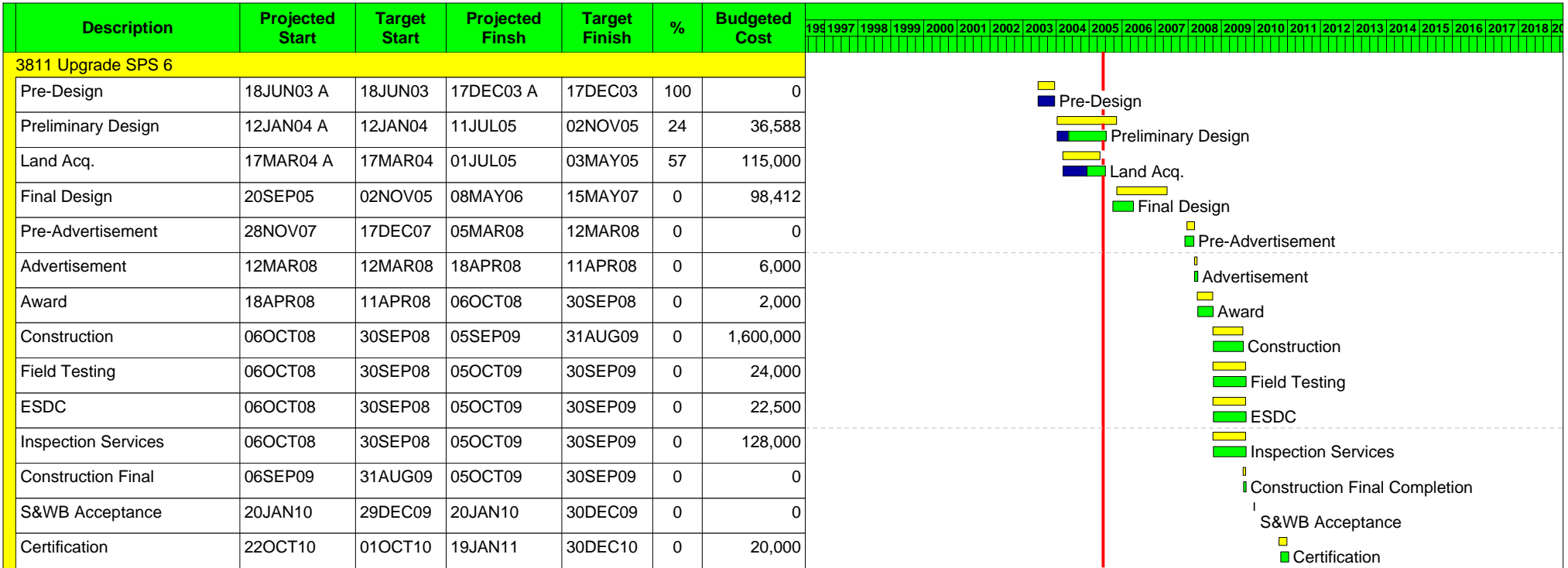
Description

Pump Station 6, in the Mid-City basin, is located on the corner of Palmyra St. and S. Solomon St., as shown in **Figure 1**. Currently, PS 6 discharges to gravity and the flow is re-pumped twice, first by PS 15 and then by PS A, before reaching the treatment plant. To reduce flow to PS 15 and PS A, PS 6 will tie into the proposed force main network. The resulting increase in pressure would cause the existing pumps to operate below their designed capacity. The station will be upgraded to operate in the proposed network.

**Figure 1
Project Location**



Current Capital Cost \$2,052,500



Data date 01FEB05

© Primavera Systems, Inc.

**Sewerage and Water Board of New Orleans
Sewer System Evaluation and Rehabilitation Program
Master Schedule**

- Early bar
- Target bar
- Progress bar