

Sewer System Evaluation and Rehabilitation Program

Capacity Project

Contract Number	3805
Name	New 42-inch Force Main from Pump Station 14 to the intersection of Dorgenois Street and Toledano Street, New 24-inch Force Main from Dorgenois at Toledano to SPS 5
Basin	Inter-Basin
Council Districts	Citywide
Status:	Phase 2.

This project is currently in the Final Design phase.

Resources

SSERP Project Engineer MWH

Design Engineer CH2MHill

Contractor

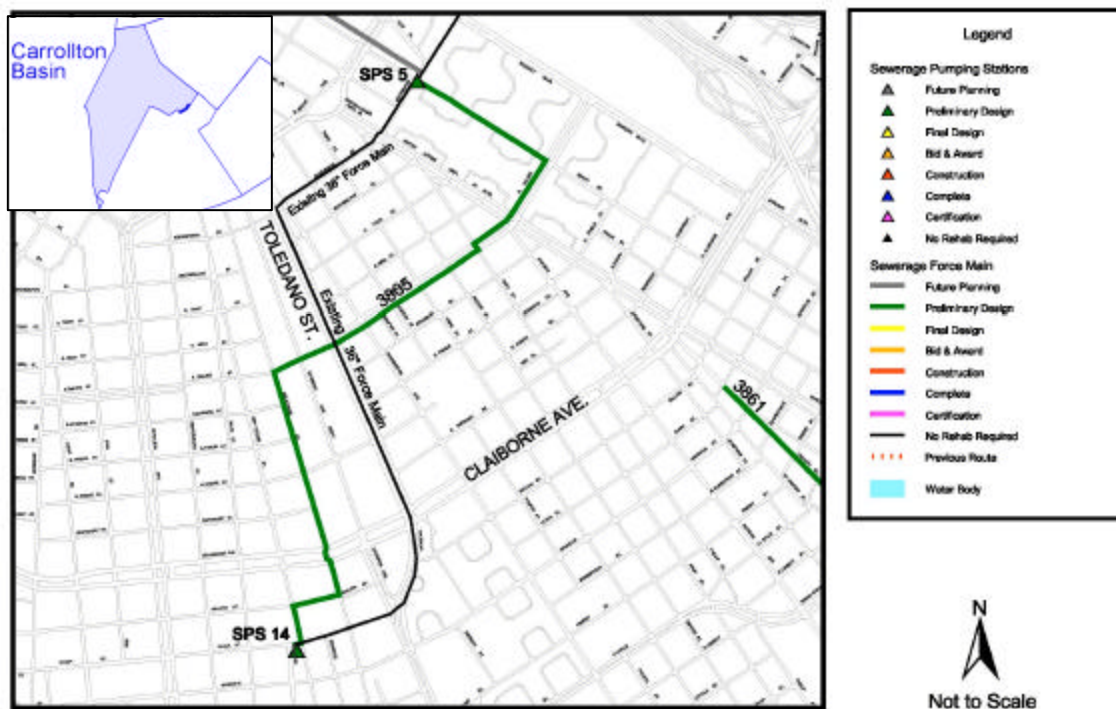
Comments

3805 - New 42-inch FM from PS 14 to the Intersection of Dorgenois and Toledano, New 24-inch FM from Dorgenois at Toledano to SPS 5

Description

This project consists of two new force mains, one in the Uptown basin and the second in the Carrollton basin. The first force main consists of approximately 5,000 feet of new 42-inch FM from PS 14 to the intersection of Dorgenois and Toledano, as shown in **Figure 1**. Currently, PS 14 discharges to both an existing 36-inch FM and the Clara Street gravity line. In order to decrease the flow in the Clara St. line and to avoid re-pumping, PS 14 will pump directly to the treatment plant through the new force main network. To minimize the increase in pressure that will be seen at PS 14 once the new force main network is operational, a new 42-inch FM into which the station will discharge is necessary.

Figure 1
Project Location



The second force main, in the Carrollton basin, consists of approximately 1,700 feet of 24-inch FM. This new force main, parallel to an existing 36-inch FM, will run from the intersection of Dorgenois and Toledano, then along Toledano to PS 5, as shown in **Figure 1**. Currently, PS 14 pumps into both the Clara Street line and a force main, both of which discharge to PS A. The upgraded PS 14 will be tied to the new force main only, pumping directly to the treatment plant. This project will provide an alternate route to the treatment plant, as well as additional capacity, for PS 14.

Current Capital Cost \$12,377,060.

Description	Projected Start	Target Start	Projected Finish	Target Finish	%	Budgeted Cost	1997 1998 1999 2000 2001 2002 2003 2004 2005 2006 2007 2008 2009 2010 2011 2012 2013 2014 2015 2016 2017 2018											
							Gantt chart showing project progress from 1997 to 2018. A vertical red line is positioned at the start of 2005.											
3805 Sewer FM from SPS 14 to SPS 5																		
Pre-Design	21MAR02 A	21MAR02	21FEB03 A	21FEB03	100	0	Pre-Design											
Preliminary Design	07MAR03 A	07MAR03	31JAN05 A	05JUL04	100	174,487	Preliminary Design											
Final Design	31JAN05 A	05JUL04	26AUG05	08JUN05	2	94,404	Final Design											
Pre-Advertisement	20JUN05	21JUN05	07SEP05	14SEP05	0	0	Pre-Advertisement											
Advertisement	14SEP05	14SEP05	21OCT05	14OCT05	0	4,126	Advertisement											
Award	21OCT05	14OCT05	10APR06	03APR06	0	1,376	Award											
Construction	10APR06	03APR06	10MAR07	04MAR07	0	11,019,331	Construction											
Field Testing	10APR06	03APR06	09APR07	03APR07	0	165,290	Field Testing											
ESDC	10APR06	03APR06	09APR07	03APR07	0	16,500	ESDC											
Inspection Services	10APR06	03APR06	09APR07	03APR07	0	881,546	Inspection Services											
Construction Final	11MAR07	04MAR07	09APR07	03APR07	0	0	Construction Final Completion											
S&WB Acceptance	18JUL07	02JUL07	18JUL07	03JUL07	0	0	S&WB Acceptance											
Certification	19APR08	03APR08	17JUL08	02JUL08	0	20,000	Certification											

Data date 01MAR05

**Sewerage & Water Board of New Orleans
Sewer System Evaluation and Rehabilitation Program
Master Schedule**

- Early bar
- Target bar
- Progress bar